

ALMA KAPPA

Offshore Support Vessel

ALKA
MARINE
SOLUTIONS



CLASSIFICATION / FLAG

Built	2008
Flag	French
IMO	9467500
Classification	Bureau Veritas I +Hull +Mach
Service notation	Tug
Navigation notation	Unrestricted navigation
Call sign	FMNC
MMSI	228 396 600

PRINCIPAL DIMENSIONS

Length o.a	37m
Breadth o.a	11,4m
Draft	4,05m
GRT	476
NRT	143
Clear Deck	120m ²

DECK EQUIPMENT

Deck Crane	1 x Heila HLRM 170-4S
Towing winch	1 x Double drum 50t
Tugger winch	1 x 20t
Towing pins	1 x 100t set
Shark Jaws	1 x 100t set
Stern roller	1 x 120t
Towing hook	1 x 45t w/ quick release

MACHINERY / PROPULSION

Maximum speed	12,5 knots - 8 m ³ /day
Economic speed	10 knots - 6 m ³ /day
Guard Duty	1 knot - 1 m ³ /day
Main engines	2 x 1007 kW Cummins KTA 38
Auxiliary engines	2 x 150 kW Generators
Harbour generator	1 x 80 kW Generator
Propulsion	2 x fixed pitch propellers in nozzles
Bowthruster	1 x 298 kW
Bollard Pull	35t

TANK CAPACITIES

Fuel	320 m ³
Fresh Water	75 m ³

ACCOMMODATION

Berths	12
<i>incl. single cabins</i>	2
<i>incl. double cabins</i>	5

MISCELLANEOUS

Heat and air conditioning system	
Sewage treatment plant	
Liferafts	2 x 25 persons
Rescue boat	1 x 6 persons

ALKA MARINE SOLUTIONS

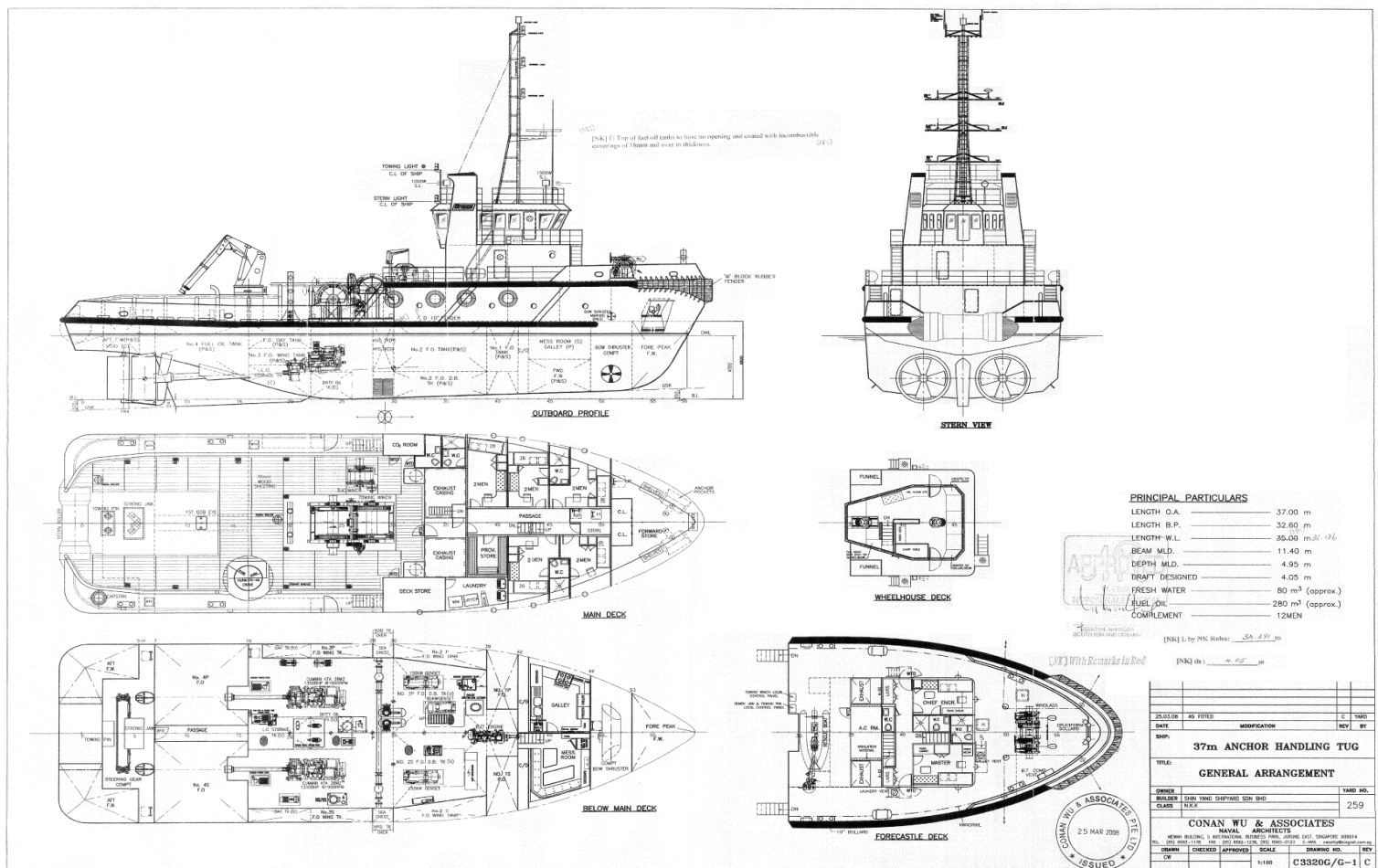
Head office: 26 avenue de Saint Cloud 78000 Versailles
contact@alkamarine.com

Details are believed to be correct but cannot be guaranteed and are subject to change

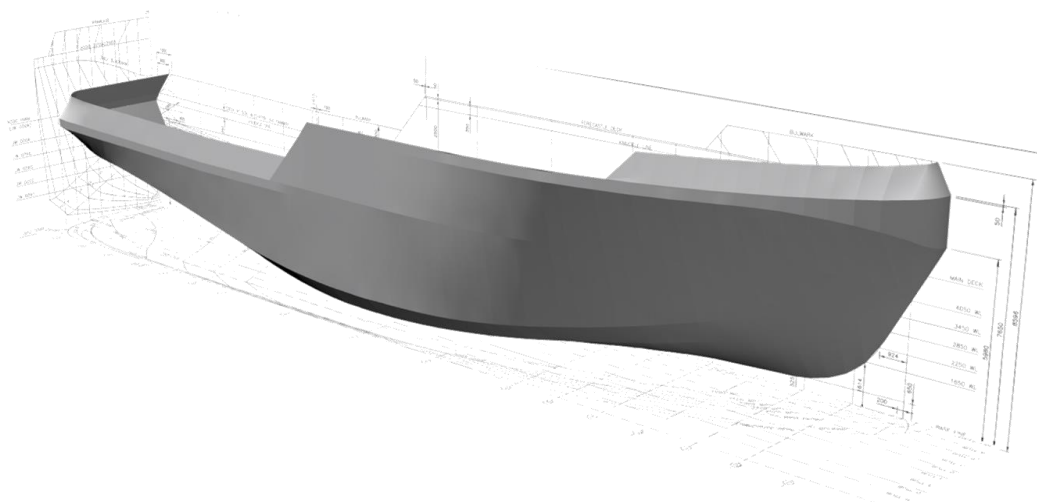
ALMA KAPPA

ALKA
MARINE
SOLUTIONS

Offshore Support Vessel



Complete 3D structural model is available for client equipment integration



ALKA MARINE SOLUTIONS

Head office: 26 avenue de Saint Cloud 78000 Versailles

contact@alkamarine.com

Details are believed to be correct but cannot be guaranteed and are subject to change

ALMA KAPPA

ALKA
MARINE
SOLUTIONS

Offshore Support Vessel



ALKA MARINE SOLUTIONS

Head office: 26 avenue de Saint Cloud 78000 Versailles
contact@alkamarine.com

Details are believed to be correct but cannot be guaranteed and are subject to change